

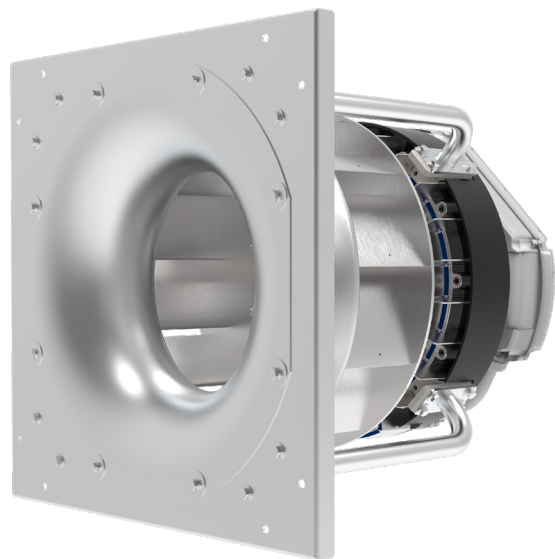
Model PL Series

PLENUM FANS FOR SUPERIOR AIRFLOW PERFORMANCE

CINCINNATI FAN 



MODEL PL PLENUM FAN



MODEL PLF PLENUM FAN

Model PL Plenum Fan

SUITABLE FOR DEMANDING AIR-MOVING APPLICATIONS

The Model PL plenum fan is engineered for efficient and reliable delivery of high air volumes in contained air-handling systems, making it a strong choice for modern industrial and commercial HVAC applications. Designed without a traditional fan housing, the Model PL integrates directly into a pressurized plenum, optimizing space while improving airflow flexibility.

Cincinnati Fan manufactures twelve sizes of the Model PL, all configurable through multiple wheel designs and fan widths, allowing users to dial in precise system performance. The design supports both standard and high-performance environments with optional aluminum or stainless-steel construction for enhanced durability.

ADVANTAGES

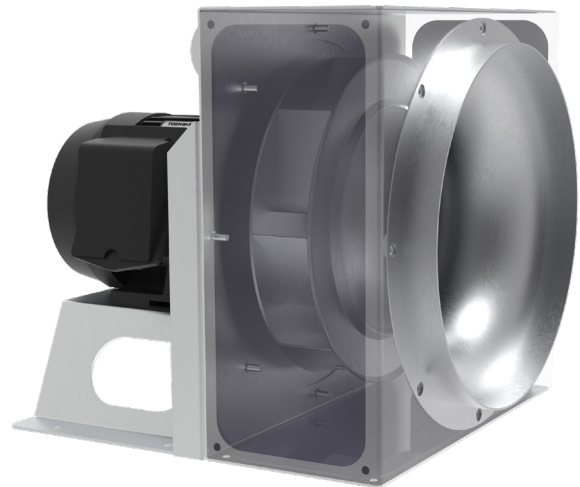
- The elimination of a fan housing reduces cost and footprint while allowing for more compact air-handling unit (AHU) designs.
- Because air discharges directly into the plenum, airflow exits the fan in any direction, often eliminating the need for diffusers, transitions, or complex ductwork geometries.
- The PL series can be assembled in banks, allowing multiple smaller fans to replace one large traditional centrifugal fan. Multiple small fan array provides partial capability if one fan is out of service.

DESIGN/CONSTRUCTION

- All models are available with four-wheel designs and in multiple widths from 50% to 100%, to deliver the exact performance you need with a direct-driven fan.
- Available in all-aluminum construction for lightweight, corrosion-resistant applications or stainless steel for harsh, corrosive, or sanitary industrial environments.

WHEEL OPTIONS

- HDDBI - Heavy-Duty Backward Inclined
- HDAF - Heavy-Duty Airfoil
- SQBI - Square Fan Backward Inclined
- SQAFF - Square Fan Airfoil
- Size: 12" (120), 13" (130), 15" (150), 16" (160), 18" (180), 20" (200), 22" (220), 24" (240), 27" (270), 30" (300), 33" (330)
- Widths: 50% to 100% in 5% increments
- Materials: Steel, Stainless Steel (HDDBI, SQBI only), Aluminum (HDDBI, SQBI only)



PERFORMANCE

- Airflow Capacity: Up to 33,000 CFM
- Static Pressure: Up to 25" SPWG
- Temperature Range:
 - Standard construction: Up to 200°F (93°C)
 - Motors above 104°F (40°C) require special motor arrangements

APPLICATIONS

- Air Handling Units (AHUs) - New and Retrofit
- Cleanrooms & Environmental Control Spaces
- Industrial Ventilation & Process Air
- Fan Array Configurations for Large Buildings

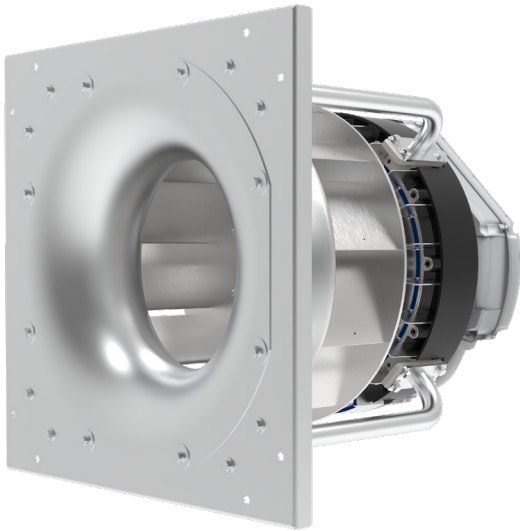
DESIGNED FOR FAN ARRAY APPLICATIONS

The Model PLF plenum fan is engineered to deliver superior airflow performance while maintaining flexibility. It's aluminum airfoil wheel design uses less power than traditional plenum fans, improving overall system efficiency without sacrificing output. Extruded aluminum airfoil blades reduce weight, enhance aerodynamics, and support improved acoustic performance.

The fan platform supports the EC motor technology. Integrated speed control is available through EC motors with built-in VFD capability, providing precision control without adding components. Model PLF plenum fans are available in six wheel sizes and partial wheel widths. This design allows airflow performance to be fine-tuned for fan arrays or any application typically served by plenum fans.

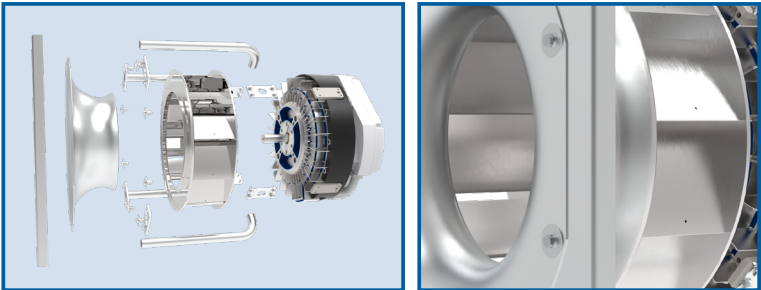
ADVANTAGES

- The airfoil bladed wheel delivers uniform airflow and improved aerodynamic efficiency for performance stability.
- The aluminum wheel construction reduces weight and supports long-term durability.
- Designed for energy efficient operation, the high efficiency airfoil wheel uses less power than traditional plenum fans.
- Motors with built-in VFD capability provide integrated speed control, allowing fan output to adjust to system demand without external controls.



DESIGN/CONSTRUCTION

- The extruded aluminum airfoil blades are lightweight, durable, and corrosion resistant.
- Wheel designed with 11-blades for increased airflow control and expanded operating stability.
- Standard NEMA frame motor mounting allows broad compatibility and ease of integration with various motor sizes.
- Fan platform designed for EC motors.



APPLICATIONS

- Air Handling Unit (AHU)
- Fan Arrays
- Data Centers
- Light Industrial Applications
- Healthcare Facilities
- Laboratories
- Commercial Buildings

PERFORMANCE

- Airflow Capacity: Up to 22,000 CFM
- Static Pressure: Up to 19" SPWG

AVAILABILITY

- Sizes: 16" (160), 18" (180), 20" (200), 22" (220), 24" (240), 27" (270)
- Widths: 75%, 100%

SPX ENGINEERED AIR MOVEMENT

7697 Snider Road
Mason, Ohio 45040 USA
513 573 1000 | cincinnati-fan.com

CF-PLSERIES-26 | ISSUED 04/2026
© 2026 SPX Engineered Air Movement | All rights reserved
In the interest of technological progress, all products are
subject to design and/or material change without notice.