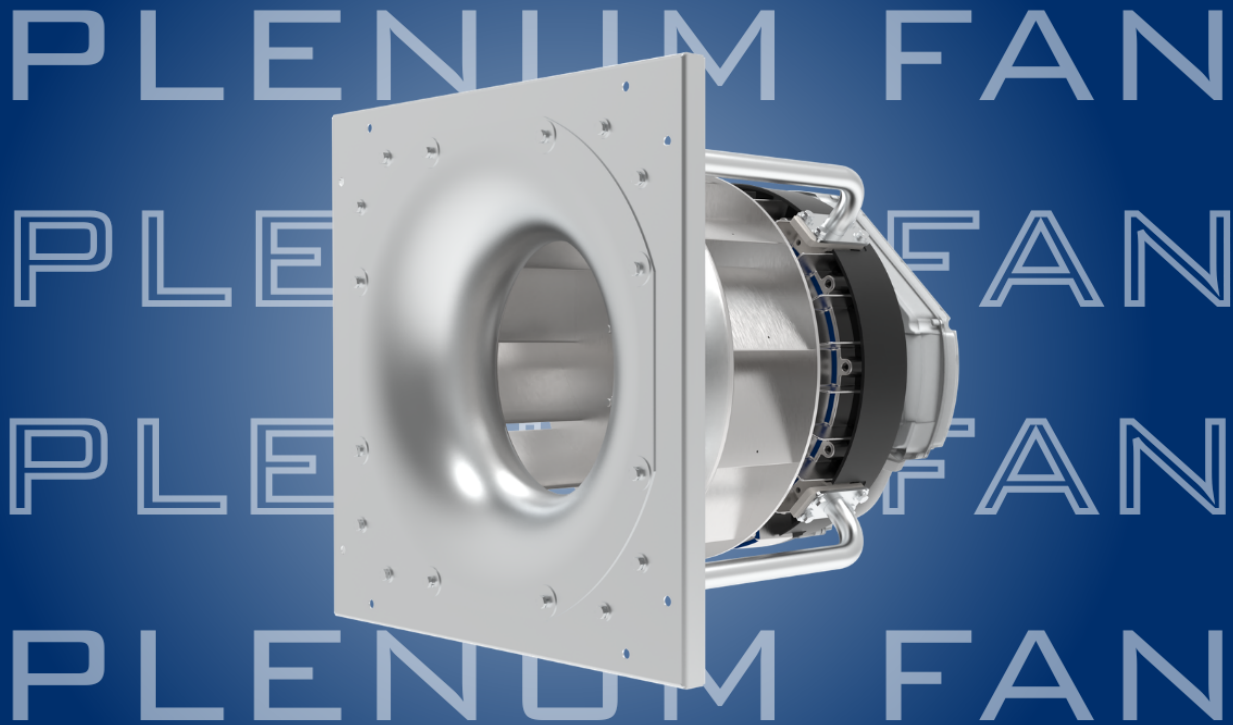
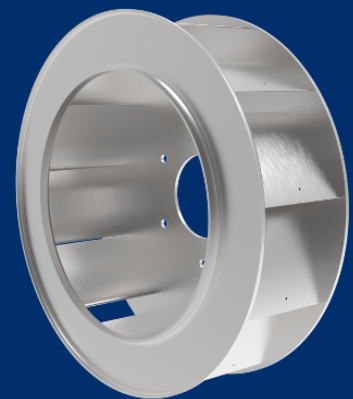


ARRAY-READY. AIRFLOW-OPTIMIZED.



Engineered for commercial fan arrays within air handling units, the **Model PLF** with EV aluminum airfoil wheel (Series CDAF) delivers reliable airflow, efficient performance, and straightforward installation.

- Face mount fan platform is designed to accept EC motors.
- Featuring the **EV** 11-blade aluminum airfoil wheel for increased airflow control.
- The airfoil wheel design uses less power than traditional plenum fans, improving overall system efficiency.



EV 11-BLADE ALUMINUM
AIRFOIL WHEEL SERIES CDAF)

CINCINNATI FAN 
WWW.CINCINNATIFAN.COM

SPX 
TECHNOLOGIES

Model PLF Plenum Fan

FACE MOUNT CENTRIFUGAL FAN FOR FAN ARRAYS

CINCINNATI FAN

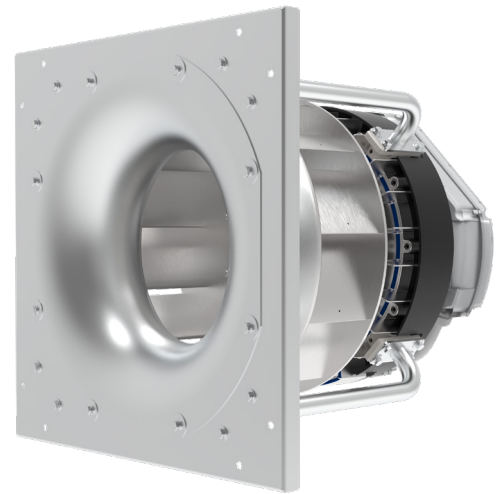
DESIGNED FOR FAN ARRAY APPLICATIONS

The Model PLF plenum fan is engineered to deliver superior airflow performance while maintaining flexibility. It's aluminum airfoil wheel design uses less power than traditional plenum fans, improving overall system efficiency without sacrificing output. Extruded aluminum airfoil blades reduce weight, enhance aerodynamics, and support improved acoustic performance.

The fan platform supports the EC motor technology. Integrated speed control is available through EC motors with built-in VFD capability, providing precision control without adding components. Model PLF plenum fans are available in six wheel sizes and partial wheel widths. This design allows airflow performance to be fine-tuned for fan arrays or any application typically served by plenum fans.

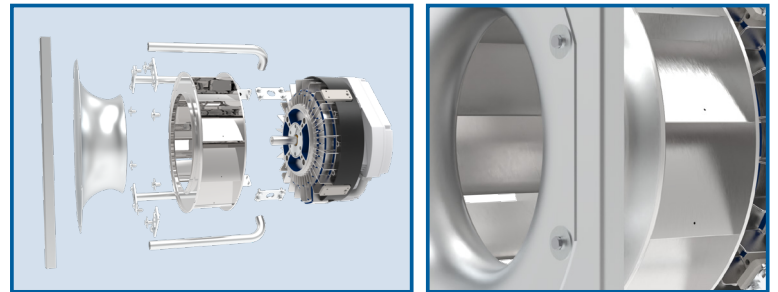
ADVANTAGES

- The airfoil bladed wheel delivers uniform airflow and improved aerodynamic efficiency for performance stability.
- The aluminum wheel construction reduces weight and supports long-term durability.
- Designed for energy efficient operation, the high efficiency airfoil wheel uses less power than traditional plenum fans.
- Motors with built-in VFD capability provide integrated speed control, allowing fan output to adjust to system demand without external controls.



DESIGN/CONSTRUCTION

- The extruded aluminum airfoil blades are lightweight, durable, and corrosion resistant.
- Wheel designed with 11-blades for increased airflow control and expanded operating stability.
- Standard NEMA frame motor mounting allows broad compatibility and ease of integration with various motor sizes.
- Fan platform designed for EC motors.



APPLICATIONS

- Air Handling Unit (AHU)
- Fan Arrays
- Data Centers
- Light Industrial Applications
- Healthcare Facilities
- Laboratories
- Commercial Buildings

PERFORMANCE

- Airflow Capacity: Up to 22,000 CFM
- Static Pressure: Up to 12" SPWG

AVAILABILITY

- Sizes: 16" (160), 18" (180), 20" (200), 22" (220), 24" (240), 27" (270)
- Widths: 75%, 100%

SPX ENGINEERED AIR MOVEMENT

7697 Snider Road
Mason, Ohio 45040 USA
513 573 1000 | cincinnati.fan.com

CF-MODELPLF-26 | ISSUED 04/2026
© 2026 SPX Engineered Air Movement | All rights reserved
In the interest of technological progress, all products are
subject to design and/or material change without notice.

SPX
TECHNOLOGIES