

Model PL Plenum Fan

CENTRIFUGAL FAN FOR HIGH AIR VOLUMES

CINCINNATI FAN

SUITABLE FOR DEMANDING AIR-MOVING APPLICATIONS

The Model PL plenum fan is engineered for efficient and reliable delivery of high air volumes in contained air-handling systems, making it a strong choice for modern industrial and commercial HVAC applications. Designed without a traditional fan housing, the Model PL integrates directly into a pressurized plenum, optimizing space while improving airflow flexibility.

Cincinnati Fan manufactures twelve sizes of the Model PL, all configurable through multiple wheel designs and fan widths, allowing users to dial in precise system performance. The design supports both standard and high-performance environments with optional aluminum or stainless-steel construction for enhanced durability.

ADVANTAGES

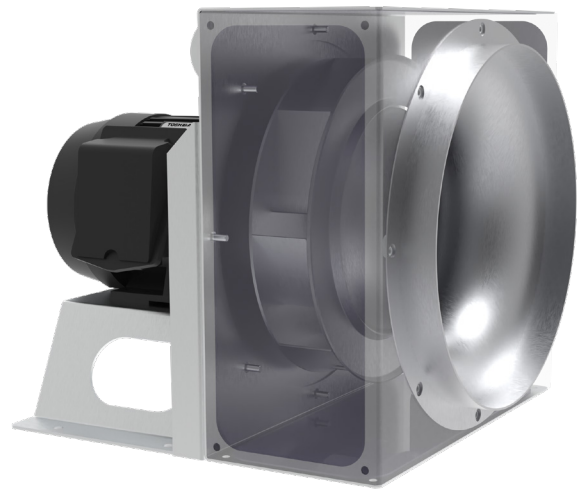
- The elimination of a fan housing reduces cost and footprint while allowing for more compact air-handling unit (AHU) designs.
- Because air discharges directly into the plenum, airflow exits the fan in any direction, often eliminating the need for diffusers, transitions, or complex ductwork geometries.
- The PL series can be assembled in banks, allowing multiple smaller fans to replace one large traditional centrifugal fan. Multiple small fan array provides partial capability if one fan is out of service.

DESIGN/CONSTRUCTION

- All models are available with four-wheel designs and in multiple widths from 50% to 100%, to deliver the exact performance you need with a direct-driven fan.
- Available in all-aluminum construction for lightweight, corrosion-resistant applications or stainless steel for harsh, corrosive, or sanitary industrial environments.

WHEEL OPTIONS

- HDBI - Heavy-Duty Backward Inclined
- HDAF - Heavy-Duty Airfoil
- SQBI - Square Fan Backward Inclined
- SQAF - Square Fan Airfoil
- Size: 12" (120), 13" (130), 15" (150), 16" (160), 18" (180), 20" (200), 22" (220), 24" (240), 27" (270), 30" (300), 33" (330)
- Widths: 50% to 100% in 5% increments
- Materials: Steel, Stainless Steel (HDBI, SQBI only), Aluminum (HDBI, SQBI only)



PERFORMANCE

- Airflow Capacity: Up to 33,000 CFM
- Static Pressure: Up to 25" SPWG
- Temperature Range:
 - Standard construction: Up to 200°F (93°C)
 - Motors above 104°F (40°C) require special motor arrangements

APPLICATIONS

- Air Handling Units (AHUs) - New and Retrofit
- Cleanrooms & Environmental Control Spaces
- Industrial Ventilation & Process Air
- Fan Array Configurations for Large Buildings

SPX ENGINEERED AIR MOVEMENT

7697 Snider Road
Mason, Ohio 45040 USA
513 573 1000 | cincinnati-fan.com

CF-MODELPL-26 | ISSUED 05/2026
© 2026 SPX Engineered Air Movement | All rights reserved
In the interest of technological progress, all products are
subject to design and/or material change without notice.

SPX
TECHNOLOGIES