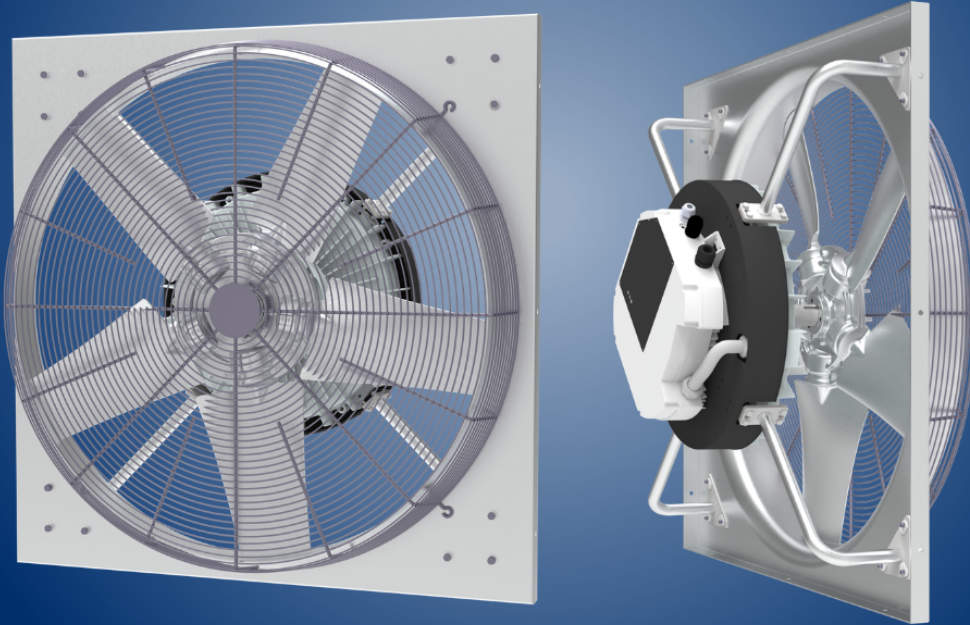


WHEN TRADITIONAL MEETS HIGH-EFFICIENCY



With the addition of an EC motor, the panel fan family has expanded to provide a high-efficiency solution specifically engineered for critical applications such as CRAH (computer room air handler) and CRAC (computer room air conditioning) systems. **The Model PFI with EC motor** provides air to help cool racks, exhaust heat, and prevent stratification for even air distribution.

- High-efficiency EC motor compatibility **reduces energy consumption** while maintaining reliable performance.
- **Customizable mounting configurations** accommodate installation constraints in CRAH/CRAC units, data center cooling racks, and other areas where a compact motor footprint is required.
- High-flow capability **moves large volumes of air efficiently** at lower pressures compared to traditional centrifugal fans.
- Multiple fan sizes available: 30", 36", and 42".

DESIGNED FOR CRAH AND CRAC UNITS

With the addition of an EC motor, the panel fan family has expanded to provide a high-efficiency solution specifically engineered for critical applications such as CRAH (computer room air handler) and CRAC (computer room air conditioning) systems. Available in a wide variety of sizes, the fan integrates seamlessly with CRAH/CRAC airflow requirements. The Model PFI panel fan provides air to help cool racks, exhaust heat, and prevent stratification for even air distribution.

The Model PFI panel fan has a compact design to reduce width and depth compared to traditional motor mounts. This simplifies installation for CRAH/CRAC units while maintaining a smaller footprint. The fan is engineered for high-flow, low pressure operation, delivering efficient airflow tailored to CRAH/CRAC unit cooling requirements.

ADVANTAGES

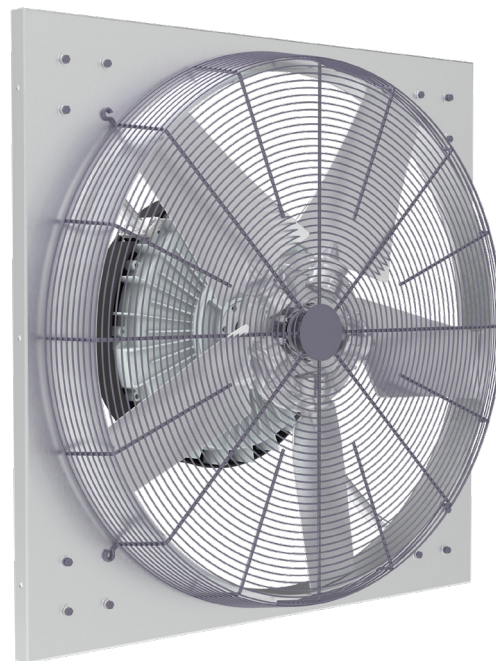
- High-efficiency EC motor compatibility reduces energy consumption while maintaining reliable performance.
- Small motor footprint allows installation for CRAH/CRAC units, maximizing space and optimizing airflow.
- High-flow capability moves large volumes of air efficiently at lower pressures compared to traditional centrifugal fans.
- Flexible blade and propeller options allow performance to be customized to specified requirements.

DESIGN/CONSTRUCTION

- Integrates a high-efficiency EC motor with reduced depth.
- Draws air from the bottom, exhausting heat efficiently.
- Multiple fan sizes available: 30", 36", and 42".
- Customizable mounting configurations to fit a wide variety of application designs.
- Engineered for minimal vibration to ensure stable operation and consistent airflow performance.
- Propeller materials include aluminum and PPG.

PERFORMANCE

- Up to 40,000 CFM



APPLICATIONS

- Computer room air handler (CRAH) units
- Computer room air conditioner (CRAC) units
- Data center cooling racks
- Light industrial applications
- Systems operating at lower pressures (0-2" w.g.)
- Applications requiring a compact motor footprint

SPX ENGINEERED AIR MOVEMENT

7697 Snider Road
Mason, Ohio 45040 USA
513 573 1000 | cincinnati.fan.com

CF-MODELPFI-26 | ISSUED 04/2026
© 2026 SPX Engineered Air Movement | All rights reserved
In the interest of technological progress, all products are
subject to design and/or material change without notice.