

Model PF Panel Fan

HIGH-VOLUME, LOW-MAINTENANCE OPERATION

CINCINNATI FAN 

ENGINEERED FOR PERFORMANCE AND FLEXIBILITY

The Model PF panel fan is built to deliver reliable, high-volume airflow in demanding industrial environments. Combining rugged construction with efficient performance, it offers a versatile solution for both supply and exhaust applications. The Model PF panel fan is available in nine sizes with multiple propeller materials—including aluminum, steel, and stainless steel—giving you the flexibility to match airflow, environment, and application requirements precisely.

With a wide range of sizes, materials, and motor options available, the Model PF panel fan can be tailored to meet specific system requirements and seamlessly integrate into a wide range of ventilation and process air systems—making it a dependable choice for long-term, low-maintenance operation.

ADVANTAGES

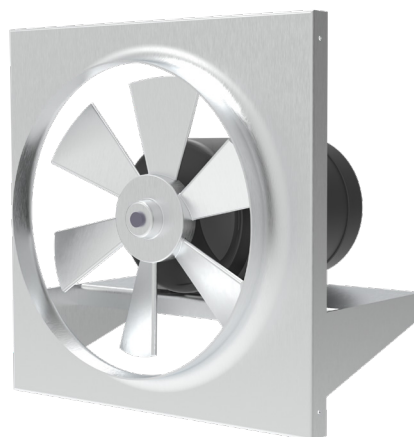
- Model PF panel fan is ideal for moving large volumes of air in low-pressure applications such as ventilation, drying, and fume removal.
- A spun venturi design improves airflow efficiency by reducing turbulence and maximizing air delivery through the fan.
- Statically balanced propellers ensure smooth, stable operation, reducing wear and improving overall system efficiency.
- Spark-resistant aluminum propellers and explosion-proof motor options make the fan suitable for environments where combustible fumes or vapors may be present.

DESIGN/CONSTRUCTION

- A variety of motor options, including ODP, TEFC/TENV, and explosion-proof enclosures, allow you to confidently specify the right solution for standard, harsh, or hazardous environments.
- Heavy-gauge steel panels—ranging from 16-gauge to 12-gauge depending on size—provide exceptional structural strength and durability.
- The direct drive design eliminates belts and sheaves, reducing maintenance requirements and minimizing downtime over the life of the fan.
- Propeller materials include aluminum and steel.

APPLICATIONS

- Commercial and industrial ventilation
- Smoke and fume removal
- Drying
- Freezer recirculation



MODEL PF-12 TO PF-20



MODEL PF-24 TO PF-48

PERFORMANCE

- Airflow Capacity: Up to 38,650 CFM
- Static Pressure: Up to 3/4" SPWG
- Temperature Range: Up to 104°F (40°C)

AVAILABILITY

- Sizes: 12", 16", 18", 20", 24", 30", 36", 42", 48"

SPX ENGINEERED AIR MOVEMENT

7697 Snider Road
Mason, Ohio 45040 USA
513 573 1000 | cincinnati-fan.com

CF-MODEL PF-26 | ISSUED 05/2026
© 2026 SPX Engineered Air Movement | All rights reserved
In the interest of technological progress, all products are
subject to design and/or material change without notice.

SPX 
TECHNOLOGIES