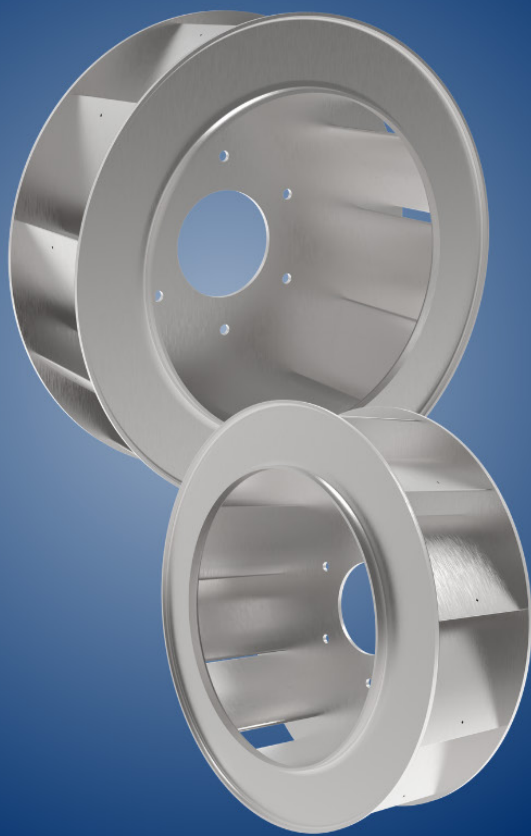


# ENGINEERED TO EVEN

## INTRODUCING THE **EV** 11-BLADE ALUMINUM AIRFOIL WHEEL



### DESIGNED FOR INCREASED AERODYNAMIC CONTROL

When more airflow matters, more performance matters. That's why Cincinnati Fan designed its new **EV** aluminum airfoil wheel (Series CDAF) with 11-blades to outperform when it matters most.

- The extruded aluminum airfoil blades reduce weight and support long-term durability.
- The airfoil wheel delivers uniform airflow and improved aerodynamic efficiency for performance stability.
- The increased number of blades support improved acoustic performance.
- Perfect for data centers, light industrial, healthcare facilities, and commercial building applications.

## LIGHTWEIGHT ALUMINUM AIRFOIL WHEEL

When performance and efficiency matter, count on Cincinnati Fan's EV aluminum airfoil wheel (Series CDAF) — engineered to deliver superior airflow performance in commercial plenum fan applications. The EV wheel's advanced design uses eleven precision aluminum airfoil blades to improve aerodynamic control, optimize airflow, and support higher system efficiency — all in a lightweight aluminum construction ideal for commercial air handling systems.

## ADVANTAGES

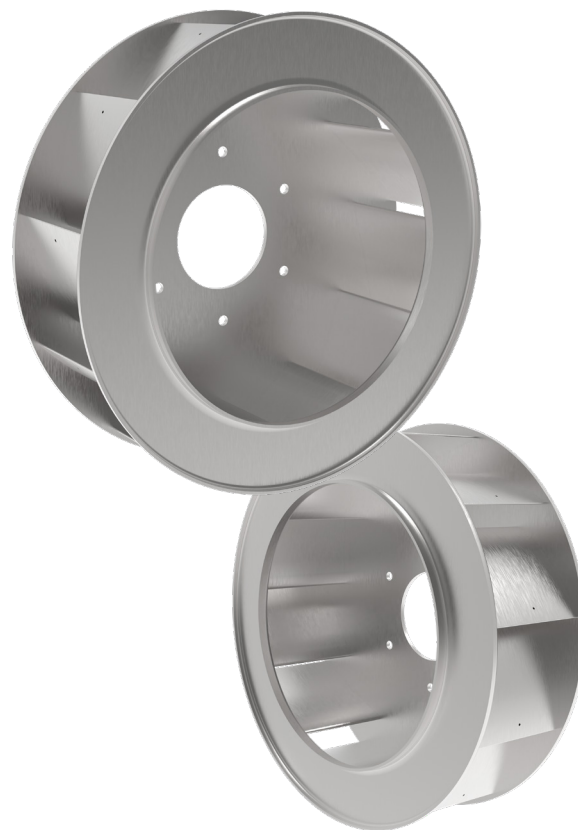
- Greater airfoil surface area interacting with the airstream results in increased aerodynamic control.
- The eleven airfoil blade configuration promotes efficient airflow and quieter operation in critical environments.
- Lightweight aluminum construction lowers the load on motors and bearings and reduces maintenance.
- Lightweight construction supports large fan arrays commonly used in commercial air handlers.

## DESIGN/CONSTRUCTION

- The eleven blade design allows for increased airflow control and expanded operating stability.
- Eleven blades help optimize airflow interaction with the wheel, producing smoother energy transfer to the airstream and improved aerodynamic performance.
- The EV airfoil blade wheel with lightweight aluminum construction, supports high efficiency operation while reducing rotating mass.

## APPLICATIONS

- Air Handling Unit (AHU) Fan Arrays
- Data Centers
- Light Industrial Applications
- Healthcare Facilities
- Laboratories
- Commercial Buildings



## AVAILABILITY

- Sizes: 16" (160), 18" (180), 20" (200), 22" (220), 24" (240), 27" (270)
- Widths: 75%, 100%

## SPX ENGINEERED AIR MOVEMENT

7697 Snider Road  
Mason, Ohio 45040 USA  
513 573 1000 | [cincinnati-fan.com](http://cincinnati-fan.com)

CF-EVWHEEL-26 | ISSUED 04/2026  
© 2026 SPX Engineered Air Movement | All rights reserved  
In the interest of technological progress, all products are  
subject to design and/or material change without notice.