

Cincinnati Fan manufactures seven models of the **Model PBS Fabricated Steel Pressure Blower**. All models are welded 10-gauge steel housings and wheels. Multiple steel alloys are available as well as cast aluminum wheels.

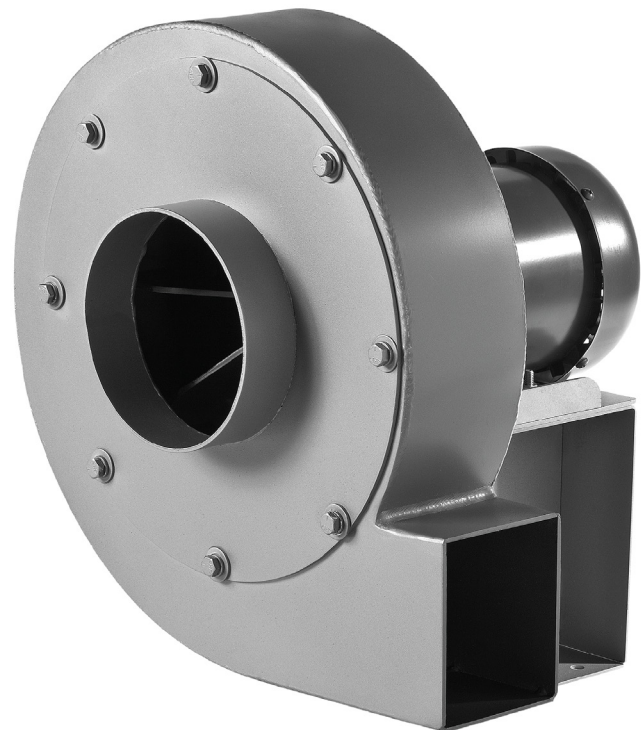
Four models are available with multiple inlet sizes for a wide range of performance. All sizes are available in both direct and belt drive and in AMCA A, B, or C spark resistant construction.

## Performance Range:

- Capacities up to 4,462 CFM and 20" SPWG
- Standard construction, air stream temperatures up to 150°F (66°C)
- Optional high temperature construction to 750°F (398°C)

## Features:

- 10-gauge, fabricated steel housing is more heavy-duty than most fabricated steel blower housings in this size range.
- All housings can rotate in 90-degree increments. Arrangements 1, 8, and 9 can rotate in 45-degree increments.
- With multiple wheel and inlet sizes available, it is easier to select a more compact, less expensive, direct-driven model to achieve the performance desired.



## Typical Applications:

- Pressurization
- Electrical equipment cooling
- Blow off systems
- Ink drying
- Combustion air
- Aeration
- Material conveying

### SPX ENGINEERED AIR MOVEMENT

7697 Snider Road  
Mason, Ohio 45040  
513 573 1000 | [cincinnati.com](http://cincinnati.com)  
[spxairmovement.com](http://spxairmovement.com)

CF-ModelPBS-24 | ISSUED 06/2024  
© 2024 SPX Engineered Air Movement | All rights reserved  
In the interest of technological progress, all products are  
subject to design and/or material change without notice.