

Cast Aluminum Wheel and Housing for Less Maintenance and No Rust

The Model PB pressure blower is AMCA Type B spark resistant and meets AMCA Type A spark resistant requirements with the addition of an aluminum shaft collar and brass hardware. Round inlet and discharge make connections to pipe or duct easy and do not require special square-to-round transitions.

Aluminum pressure blowers offer many advantages including long service life in demanding applications. The Model PB can be installed outdoors and is ideal for temperatures below 0° F. It can also be used in many food processing applications where cleanliness is critical and equipment wash downs are a daily occurrence.

Performance Range:

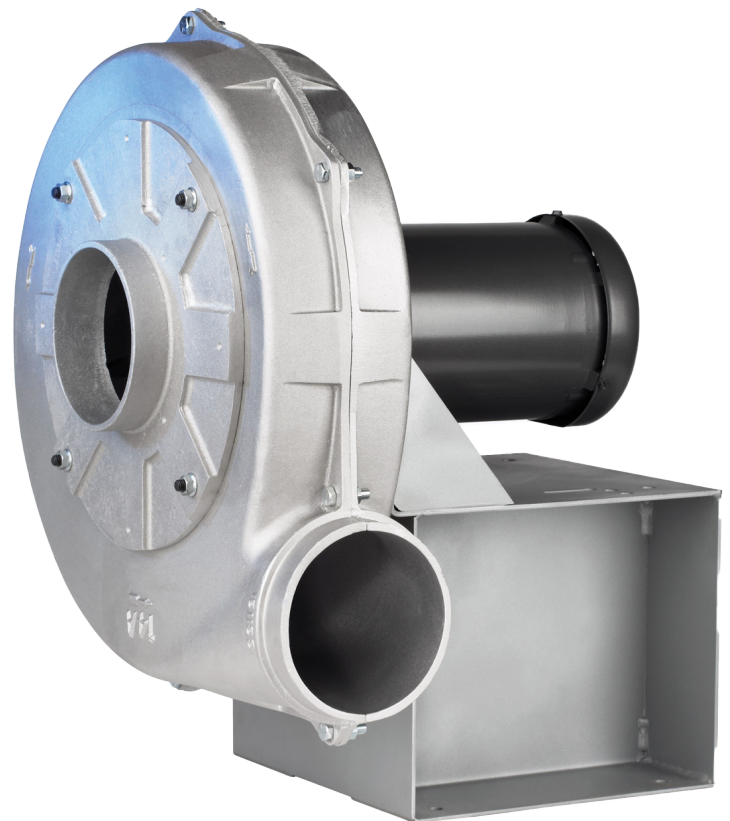
- Capacities up to 4500 CFM and 20" SPWG
- Standard air stream temperatures to 150°
- Optional high temperature construction up to 400°

Design/Construction:

- Type – cast aluminum wheel and housing
- Belt driven arrangements are available
- Arrangement 8 units come standard with shaft/coupling guards
- Arrangement 9 units come standard with belt guards

Typical Applications:

- Pressurization
- Electrical equipment cooling
- Blow off systems
- Ink drying
- Combustion air



SPX ENGINEERED AIR MOVEMENT

7697 Snider Road
Mason, Ohio 45040
513 573 1000 | cincinnati-fan.com
spxairmovement.com

CF-ModelPB-24 | ISSUED 1/2024
© 2024 SPX Engineered Air Movement | All rights reserved
In the interest of technological progress, all products are
subject to design and/or material change without notice.