

Cincinnati Fan offers 12 sizes of the **Model CPF Centrifugal Backward Inclined Plug Fan** in AMCA Class II and III construction. Designed to efficiently deliver large volumes of recirculated air, the Model CPF can be provided with or without a housing.

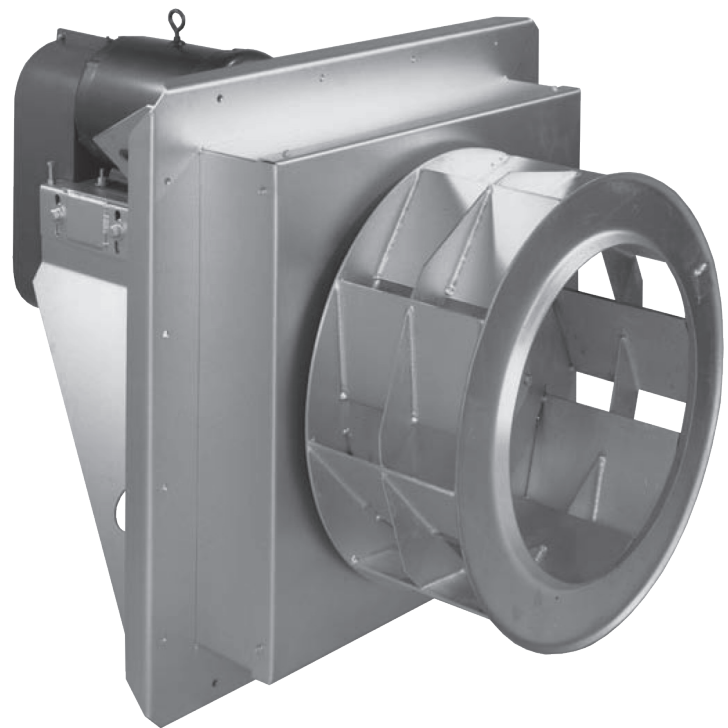
All models are available with three wheel designs and in multiple widths from 50% to 100% to deliver exacting performance with a direct driven blower. Arrangement 9 belt driven fans are also available, which can be provided with insulated plug boxes for extreme temperatures. All aluminum and all stainless steel construction are available.

Performance Range:

- Capacities up to 100,000 CFM and 25" SPWG
- Standard construction, air stream temperatures up to 200°F (93°C)
- Optional high-temperature construction, temperatures up to 750°F (398°C)

Features:

- Available in AMCA A, B, or C spark resistant construction.
- Extended fan shafts extend the wheel through insulated oven walls up to 6" thick.
- Insulated plug boxes, up to 6" wide are available.
- Inlet bell for smooth air entrance into the wheel and maximize efficiency is standard on all units.



Typical Applications:

- Heating
- Oven recirculation
- Dryer recirculation
- Kilns
- Freezers
- Dust collection

SPX ENGINEERED AIR MOVEMENT

7697 Snider Road
Mason, Ohio 45040
513 573 1000 | cincinnati-fan.com
spxairmovement.com

CF-ModelCPF-24 | ISSUED 06/2024
© 2024 SPX Engineered Air Movement | All rights reserved
In the interest of technological progress, all products are
subject to design and/or material change without notice.